

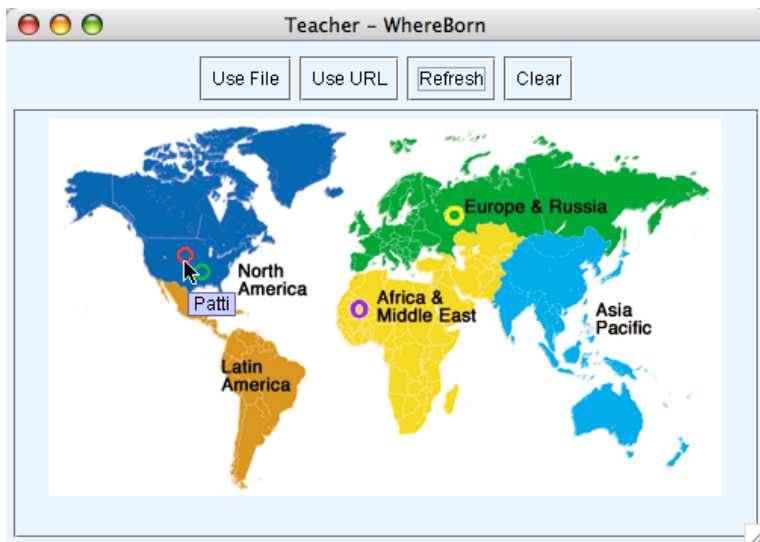
TUPLE SPACES Project – Imagemap Activity

Students select relevant areas of an image, view each others' selections, and discuss differences

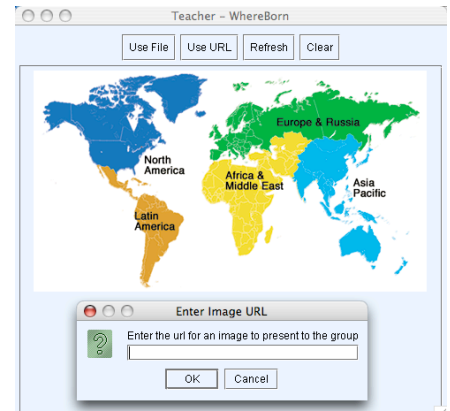
Imagemap

Imagemap is a simple, very general purpose activity, in which the teacher poses an inquiry that can be responded to by marking up an image. The teacher makes the image available (*writes*) to the class over the network. Then, as everyone is looking at it (*reads*), a question is posed (*write*). For example, an anatomical drawing might be made available and the students asked to indicate the location of the heart. Or, a world map could be made available and the students asked to indicate the region where their mother was born. Each student makes a mark and submits (*writes*) their answer to the network. All of the students' marks are aggregated and shown on a public display or on each individual device. Marks can appear anonymously, or coded by color in such a way that each student can identify their own contribution, or coded by a name label in such a way that each student can identify every other student's contribution. Discussion can then ensue about the aggregate result.

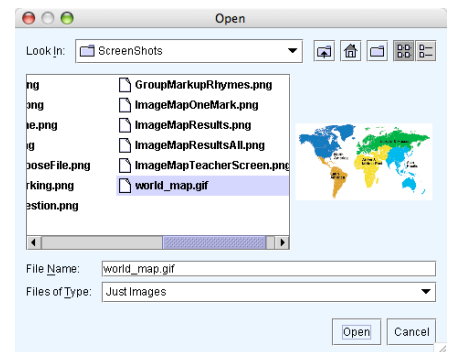
Tuples: ImageMapActivityTuple, ImageMapUserTuple, ImageTuple, ImageURLTuple, UserColorTuple, UserPointTuple



Viewing all of the regions selected by students in the class.



(Teacher) Entering the URL of an image to present to the class.



(Teacher) Loading a local image file to present to the class.



Marking a region on the image (in red).